

NORDIC ACQUA CLEAN

Technical Specifications

Composition: 50% PES, 15% PA, 35% ACRIL

Width: 140 cm. UNE 400335

Weight m2: 410 gr/m2

Tensile strenght: > 20 N (BS 4303) - > 3 (DIN 53859-5)

Tear strenght: > 350,0 - UNE EN ISO 13934-1 (N)

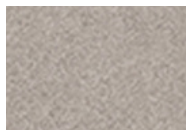
Tear displacement: Warp: < 4 (BS 3320) - Weft: < 6 (BS 53868) PR EN ISO 13936-2 (mm)

Abrasion resistance: 250.000 cycles UNE EN ISO 12947

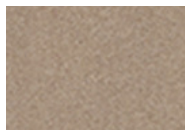
Pilling resitance: > 4 UNE EN ISO/DIS 12945-2

Dye resistance to rubbing: 4 Good (ISO 105-X12)

Dye resistance to light: 6 Good (ISO 105-B02)



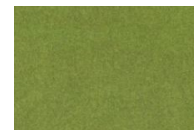
NORDIC 115



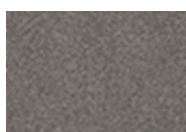
NORDIC 108



NORDIC 129



NORDIC 907



NORDIC 116



NORDIC 114



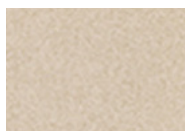
NORDIC 118



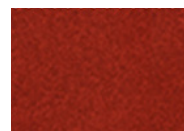
NORDIC 909



NORDIC 117



NORDIC 101



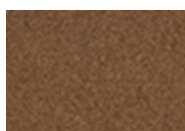
NORDIC 131



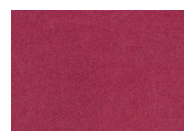
NORDIC 121



NORDIC 132



NORDIC 111



NORDIC 906

For maintenance see: http://www.aquaclean.com/US_en/how-to-clean-stains-from-your-sofa

HARLEQUIN

FOR FL@T CHAIR ONLY

Material		100% polyester
Weight	g/lm	510
	oz/lin.yd	16.45
Width	cm	160
	inches	63
Abrasion resistance	rubs martindale (EN ISO 12947-2)	100,000
Piling	scale 1-5, max. 5 - EN ISO 12945-2	5
Colour fastness to light	scale 1-8, max. 8 - EN ISO 105-B02	5-7

wash or dry cleaning



40°C shrinkage max. 4,5%

Maintenance

CA TB 117-2013
 BS 5852 Part 1 0,1 Cigarette & match
 BS EN 1021 1&2 Cigarette and Match
 Will also pass other flammability standards. Flame retardant performance is dependent upon the foam used.

Flammability

Contain no flame retardant chemical.

Environment

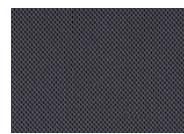
Oeko-Tex
 Environment



Z01



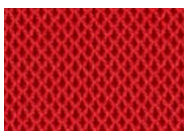
Z02



Z04



Z03



Z06



Z07



Z08



Z05